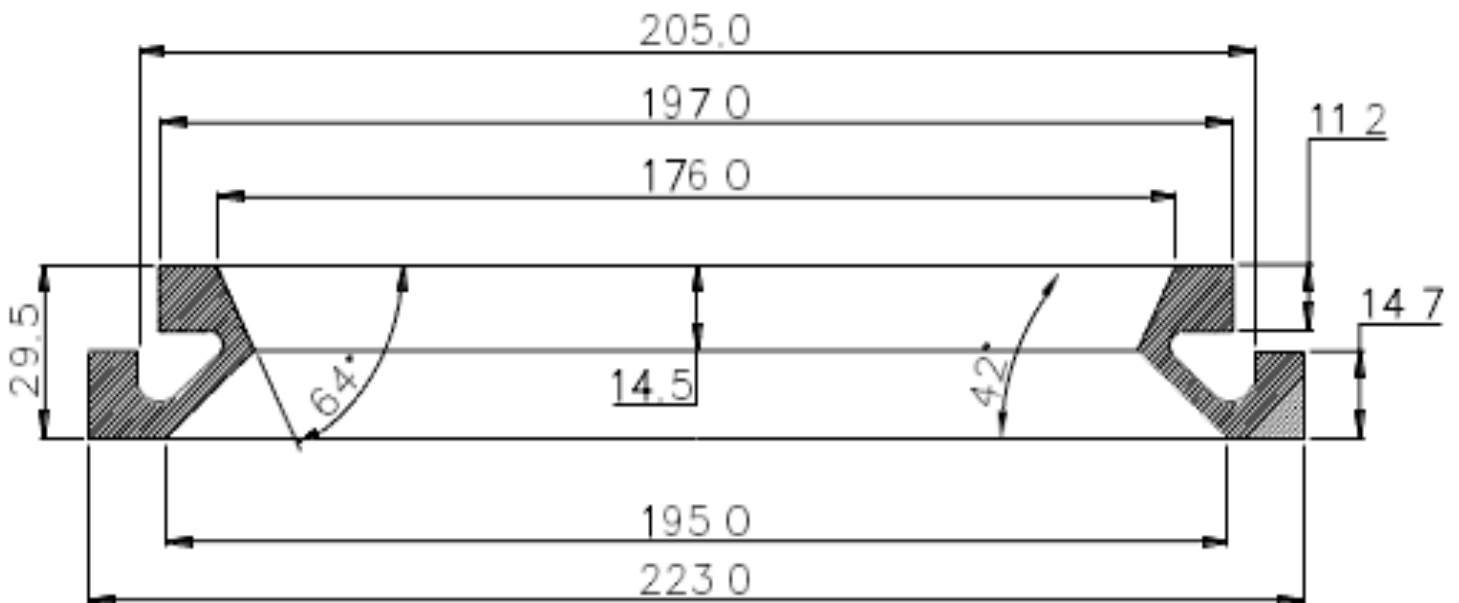


WESTERN DOME VALVE

The rubber seal ring is made of special rubber characterized by high-temperature resistance, corrosion resistance, wear resistance and aging resistance as well as long service life. Upon opening of the valve, the feed inlet opens to full extent without obstruction. The valve is suitable for materials such as gas liquid, semi-fluid and solid powder, etc.



Seal ring of inflatable dome valve Physical dimension and coupling dimension and model of matched actuator

Model Specification	Connection Size	Physical dimension and coupling dimension and model of matched actuator(mm)			
DN	W	K	E	D	H
65	128	103	101	88	21
100	175	140	148	120	33
150	220	190	195	175	30
200	275	250	250	220	31
200	275	245	245	225	31
200	275	240	245	225	32
300	405	360	360	332	42
300	405	365	365	330	47